

Social Policies and Distributional Outcomes

in a Changing Britain

Measuring violence using Crime Survey for England and Wales: the case of young black women

Dr Kerris Cooper and Dr Polina Obolenskaya

5 November 2020

Black Lives Matter and Violence Against Women Research



Disclaimer

This is work in progress and findings in this presentation should be treated as provisional.

This work contains statistical data from ONS which is Crown Copyright. The use of the ONS statistical data in this work does not imply the endorsement of the ONS in relation to the interpretation or analysis of the statistical data. This work uses research datasets which may not exactly reproduce National Statistics aggregates.

Problems with violence measure in the official statistics (ONS)

- ONS measure of violent crime (official measure) uses data from the Crime Survey for England and Wales (face to face questionnaire)
- It includes: serious wounding; other wounding; common assault; attempted assault; serious wounding with sexual motive; other wounding with sexual motive
- ONS measure of violent crime does not include:
 - rape, attempted rape and indecent assault offences (face to face questionnaire)
 - reporting of domestic and sexual violence (self-completion questionnaire)
- It therefore underestimates proportion of people who experience violence overall and particularly underestimates it for women

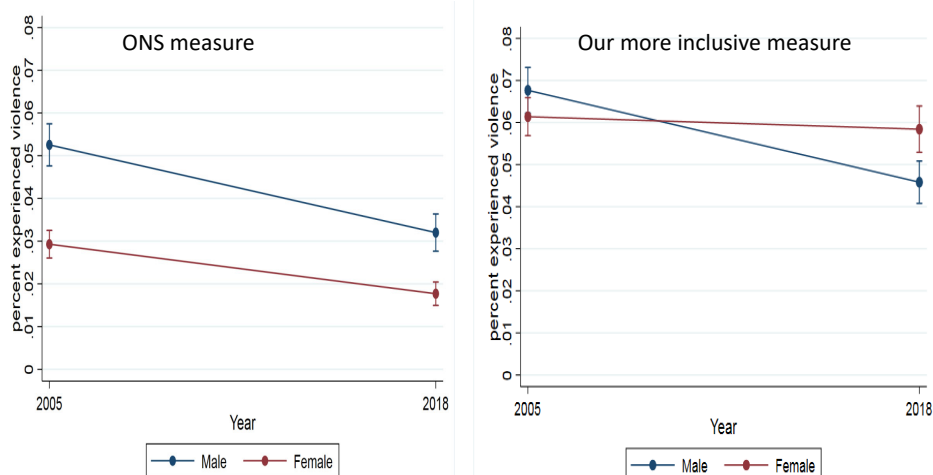
This is not new...

- Sylvia Walby and colleagues have long been arguing for inclusion 'sexual offences' (face to face questionnaire) in measuring violence, and have done so in their analyses.
- They also advocate the use of domestic and sexual violence from the self-completion questionnaire but they way the questions are asked makes it impossible to count the number of incidents of violence accurately, which is the focus of their work.
- We were able to utilise the self-completion data on domestic and sexual violence in our work as we focus on the *number of people* experiencing violence rather than the number of incidents of violence

So what we did

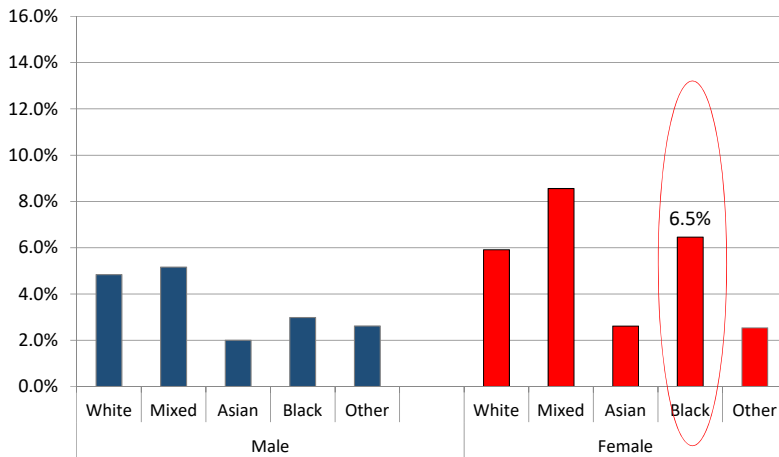
- Re-estimated the proportion of people affected by violence in England and Wales (in the last 12 months), enhancing the ONS measure by adding answers to the omitted offences and the self-completion questionnaire
- Looked and how overall risks of experiencing violence changed overtime
- How these changed for men and women
- And estimated the risks of experiencing violence by gender, age and ethnicity

Official (ONS) violent crime measure vs our more inclusive measure (adults age 16-59)



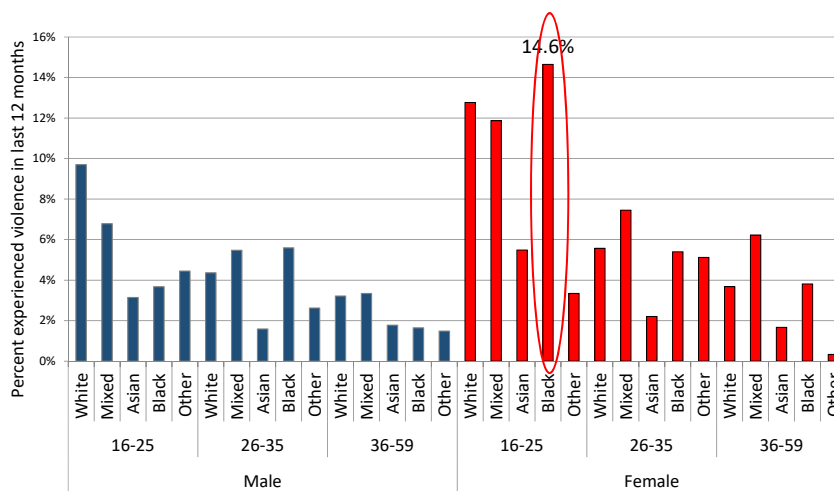
Source: Authors' analysis using ONS [Office for National Statistics], Crime Survey for England and Wales, Secure access dataset, SN 7280 (8th edition).

Violent crime by gender and ethnicity –inclusive measure (adults age 16-59, pooled 2017-2018)



Source: Authors' analysis using ONS [Office for National Statistics], Crime Survey for England and Wales, Secure access dataset, SN 7280 (8th edition).

Violent crime by gender, age and ethnicity – inclusive measure (adults age 16-59, pooled 2017-2018)



Source: Authors' analysis using ONS [Office for National Statistics], Crime Survey for England and Wales, Secure access dataset, SN 7280 (8th edition).

Summary and conclusion

When we include domestic and sexual violence in the overall violence measure we see that:

- More people experience violence than official ONS measure shows
- Between 2005 and 2018 the risk of violence decreased less steeply for women than men
- By 2018 women are actually at *greater* risk of experiencing violence than men
- Young black women (16-25) are at a particularly high risk of experiencing violence

Social Policies and Distributional Outcomes

in a Changing Britain

THANK YOU!

Kerris Cooper k.m.cooper@lse.ac.uk @CooperKerris

Polina Obolenskaya p.obolenskaya@lse.ac.uk @OboleP

SPDO project website:

<http://sticerd.lse.ac.uk/case/new/research/spdo/default.asp>



Data References

ONS [Office for National Statistics] (2019), Crime Survey for England and Wales, 1996-2018: Secure Access [data collection] 8th Edition. UK Data Service. SN: 7290. <http://doi.org/10.5255/UKDA-SN-7280-8>