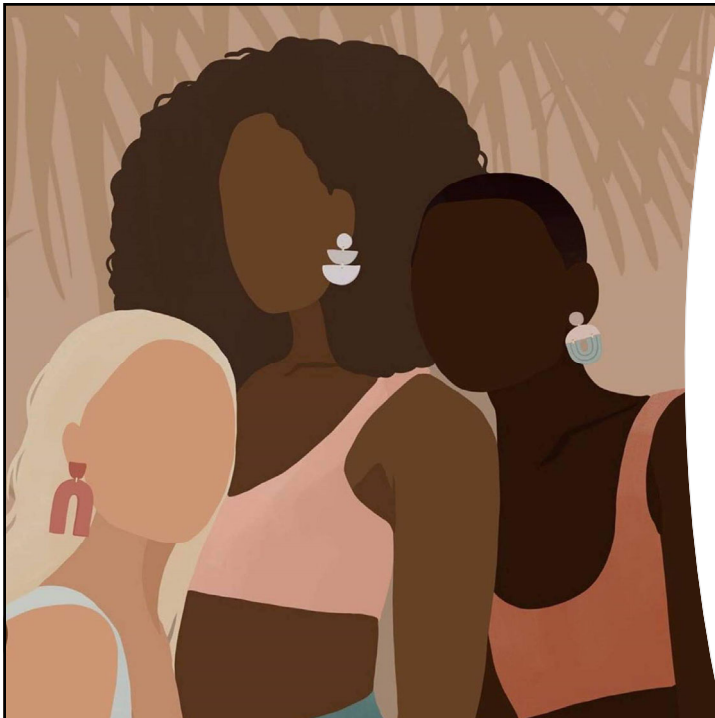
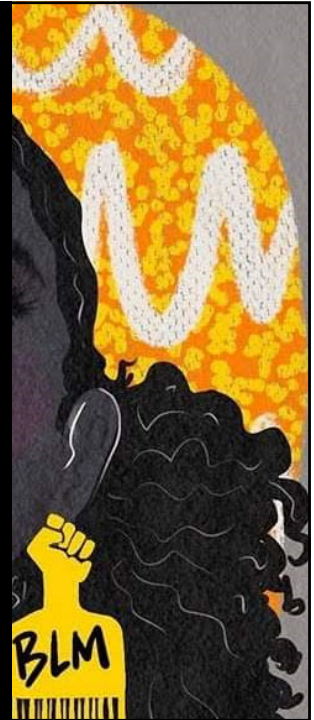


BLM: Violence Against Women- Toxic Black Femininity

By Michaela Campbell
PhD student
University of Warwick



BLM: Violence Against Women- Toxic Black Femininity

- US scholar's exploration of Toxic Black Femininity and intimate partner violence (IPV)
- *"Rigidly strong...hypersexual...primary carer to all...before acknowledging one's own feelings"* (Kelly et al., 2020: 55)
- Post-traumatic slave syndrome (PTSS), a discourse that explores the residual effects of slavery and oppression on Black women



BLM: Violence Against Women- Toxic Black Femininity

- What words come to mind when viewing this image?
- Black women oppressed at macro and micro levels of society
- IPV and PTSS further compound the oppression of Black women
- Omissions from research of Black women's lived experience of IPV has implications for policy and practice



BLM: Violence Against Women-Black Toxic Femininity

- An "awakening" essential to respond to Black women's needs
- Toxic Black Femininity, PTSS and systemic trauma intrinsically linked
- Genuine commitment needed to fund BAME domestic abuse services
- Violence against Black women can no longer be brushed aside